

ORIGINAL

N.H.P.U.C. Case No. DE 10-261
Exhibit No. CLE #1
Witness. Parra

DO NOT REMOVE FROM FILE

2005-2011 Capacity Factor: Brayton Point 1

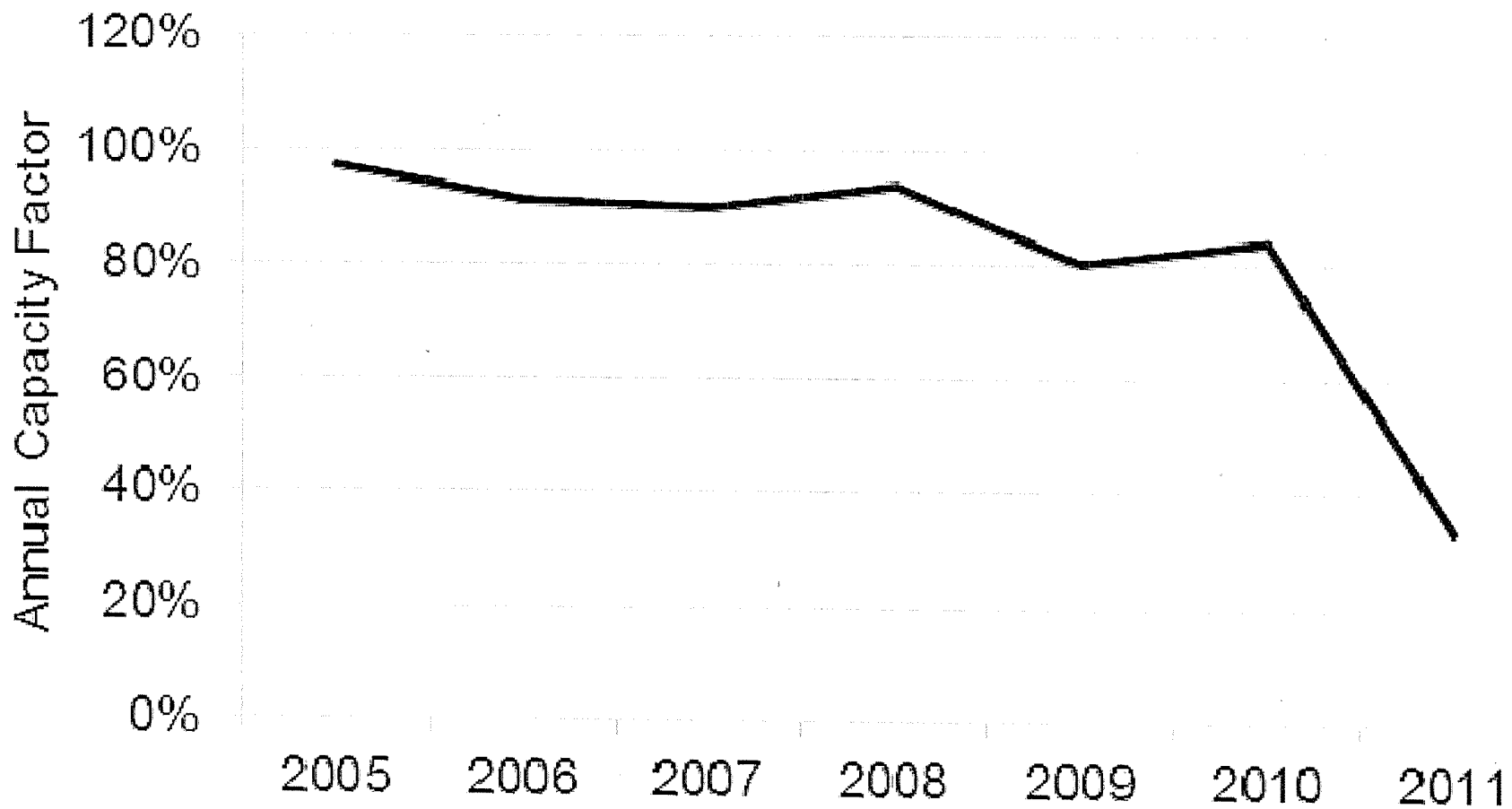


Sources:

EPA Air Markets Program Data 2005-2011.

EIA Form 860 2010.

2005-2011 Capacity Factor: Brayton Point 2

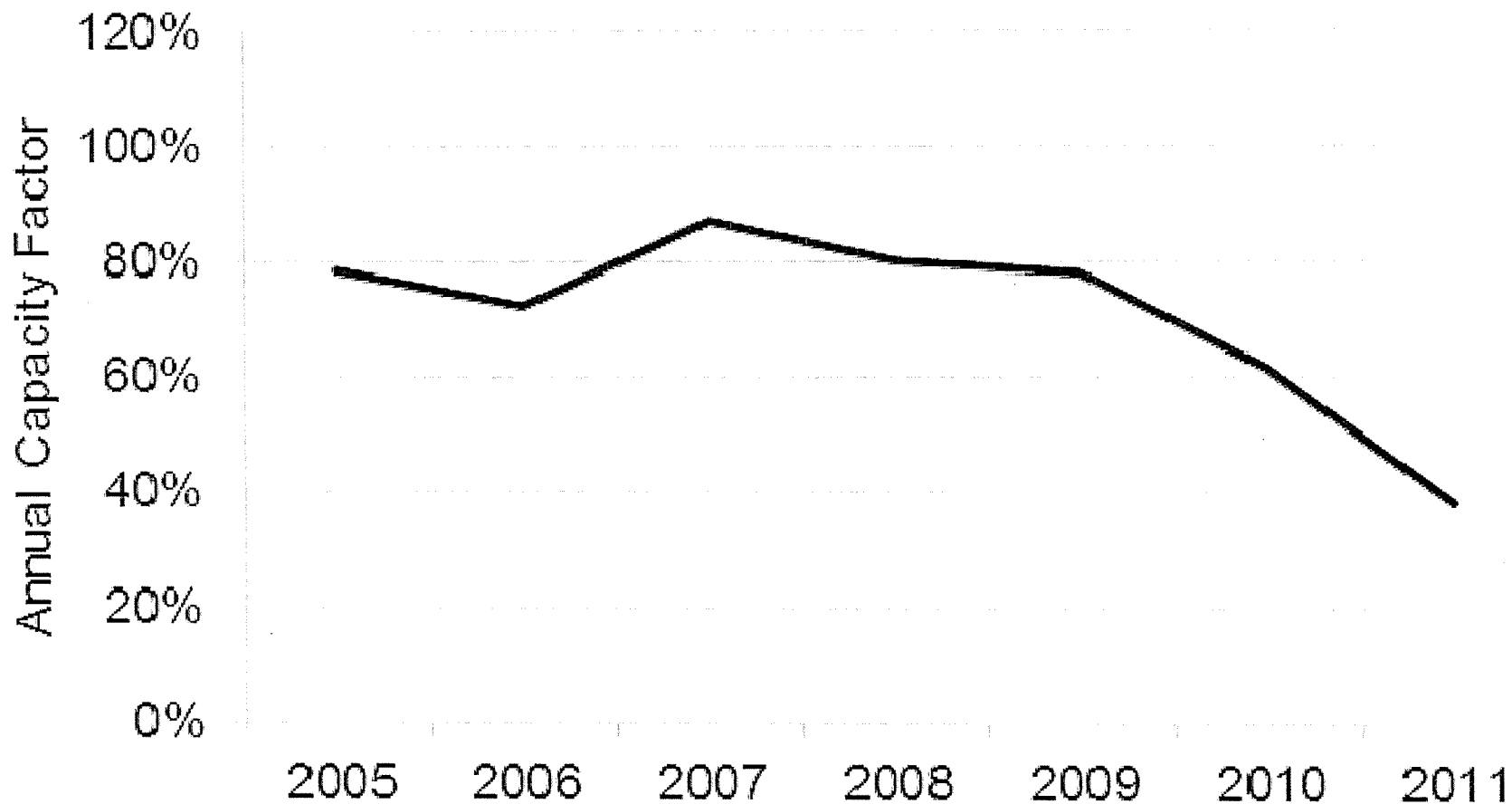


Sources:

EPA Air Markets Program Data 2005-2011.

EIA Form 860 2010.

2005-2011 Capacity Factor: Brayton Point 3



Sources:

EPA Air Markets Program Data 2005-2011.

EIA Form 860 2010.

www.synapse-energy.com | ©2012 Synapse Energy Economics Inc. All rights reserved.

2005-2011 Capacity Factor: Bridgeport Harbor 3

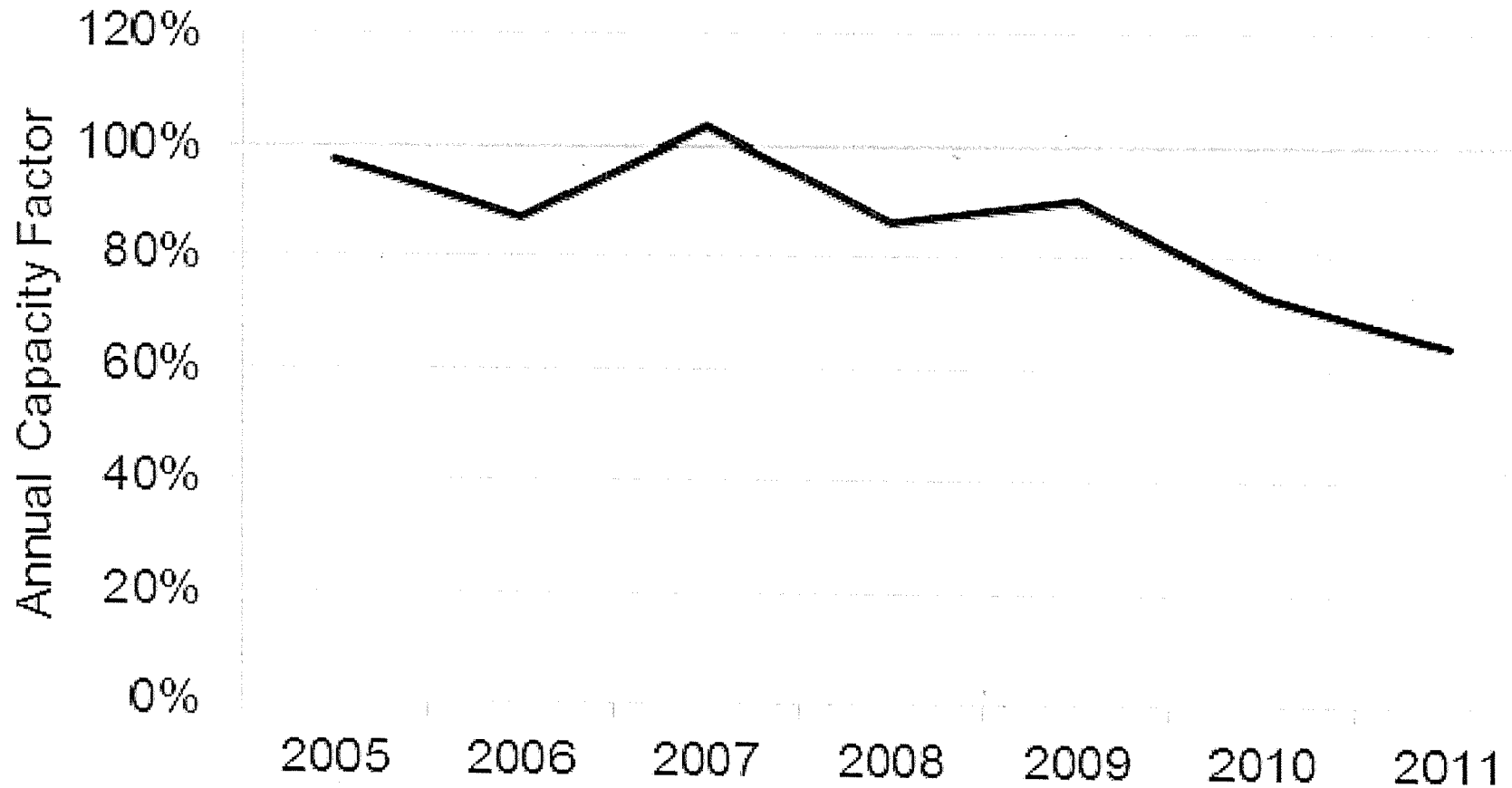


Sources:

EPA Air Markets Program Data 2005-2011.

EIA Form 860 2010.

2005-2011 Capacity Factor: Merrimack 1

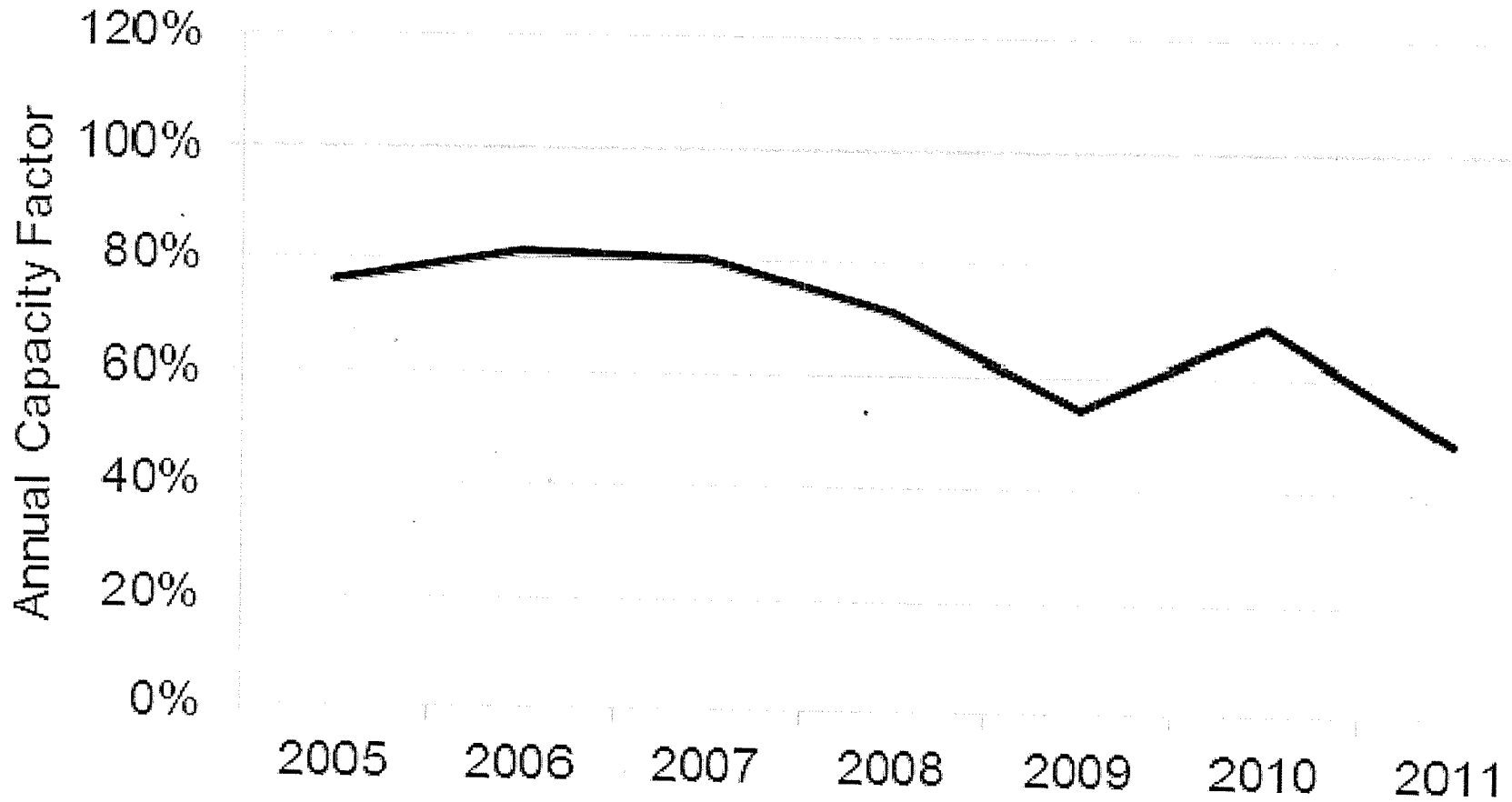


Sources:

EPA Air Markets Program Data 2005-2011.

EIA Form 860 2010.

2005-2011 Capacity Factor: Merrimack 2

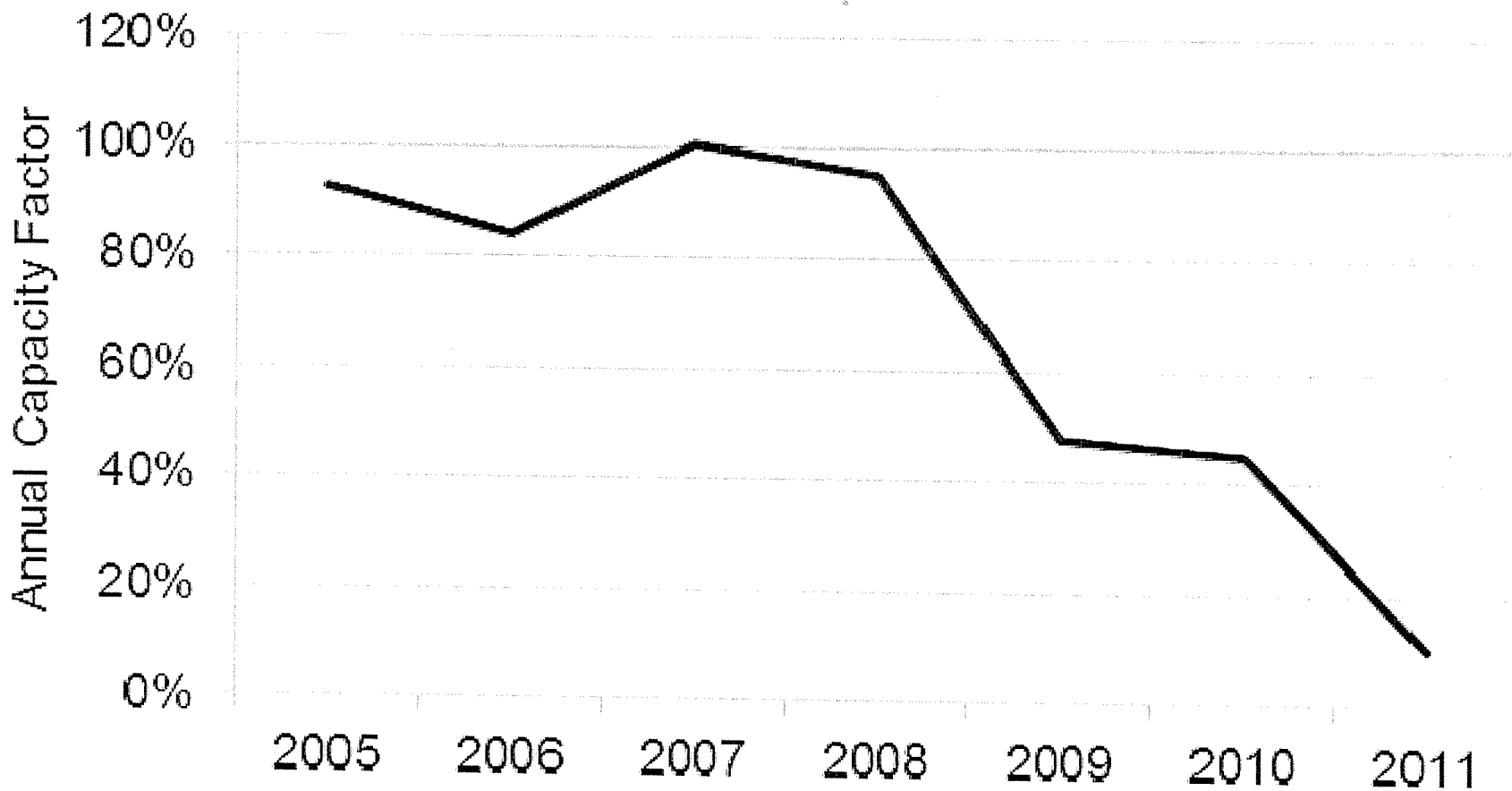


Sources:

EPA Air Markets Program Data 2005-2011.

EIA Form 860 2010.

2005-2011 Capacity Factor: Mount Tom 1

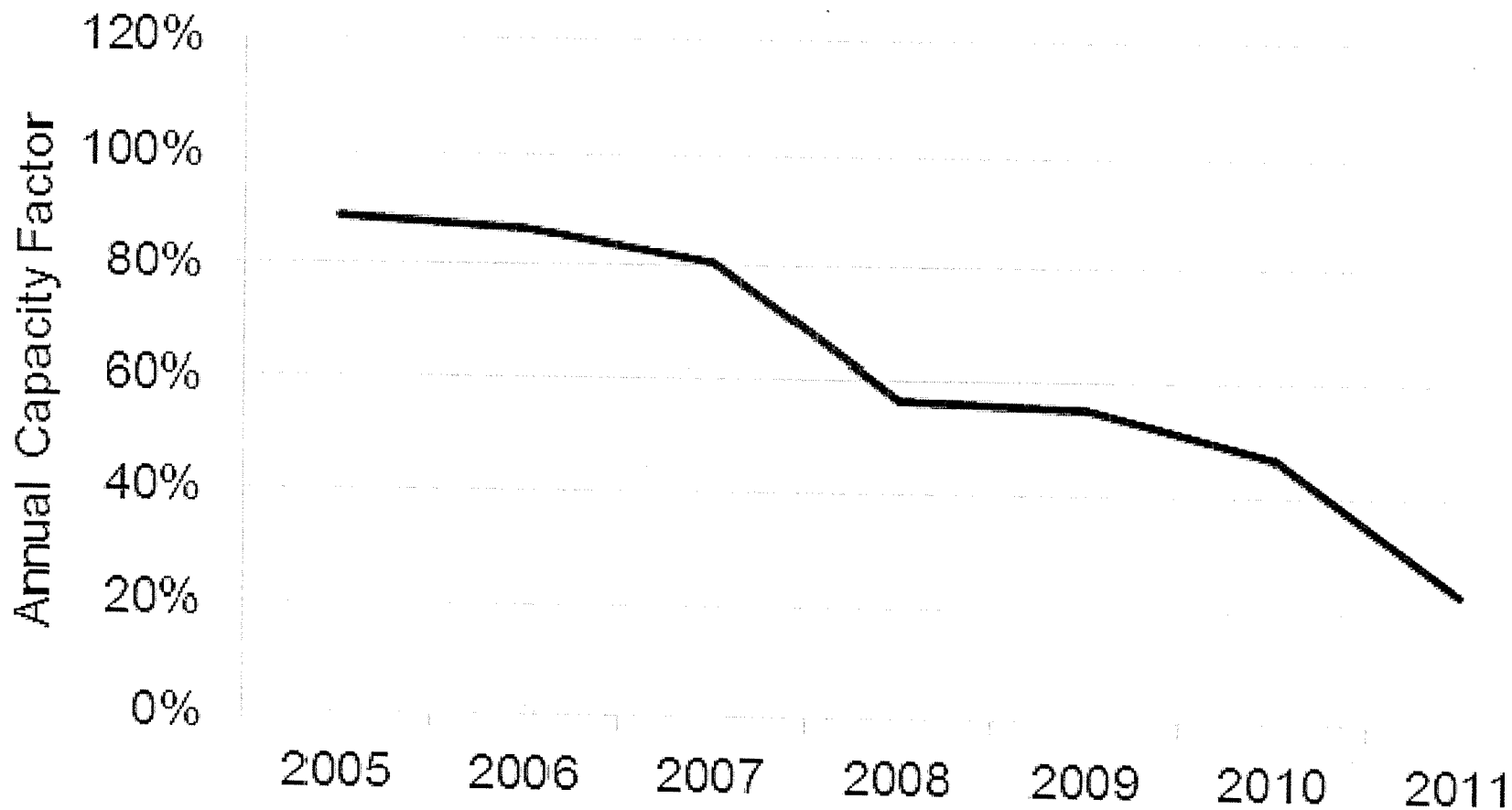


Sources:

EPA Air Markets Program Data 2005-2011.

EIA Form 860 2010.

2005-2011 Capacity Factor: Salem Harbor 1

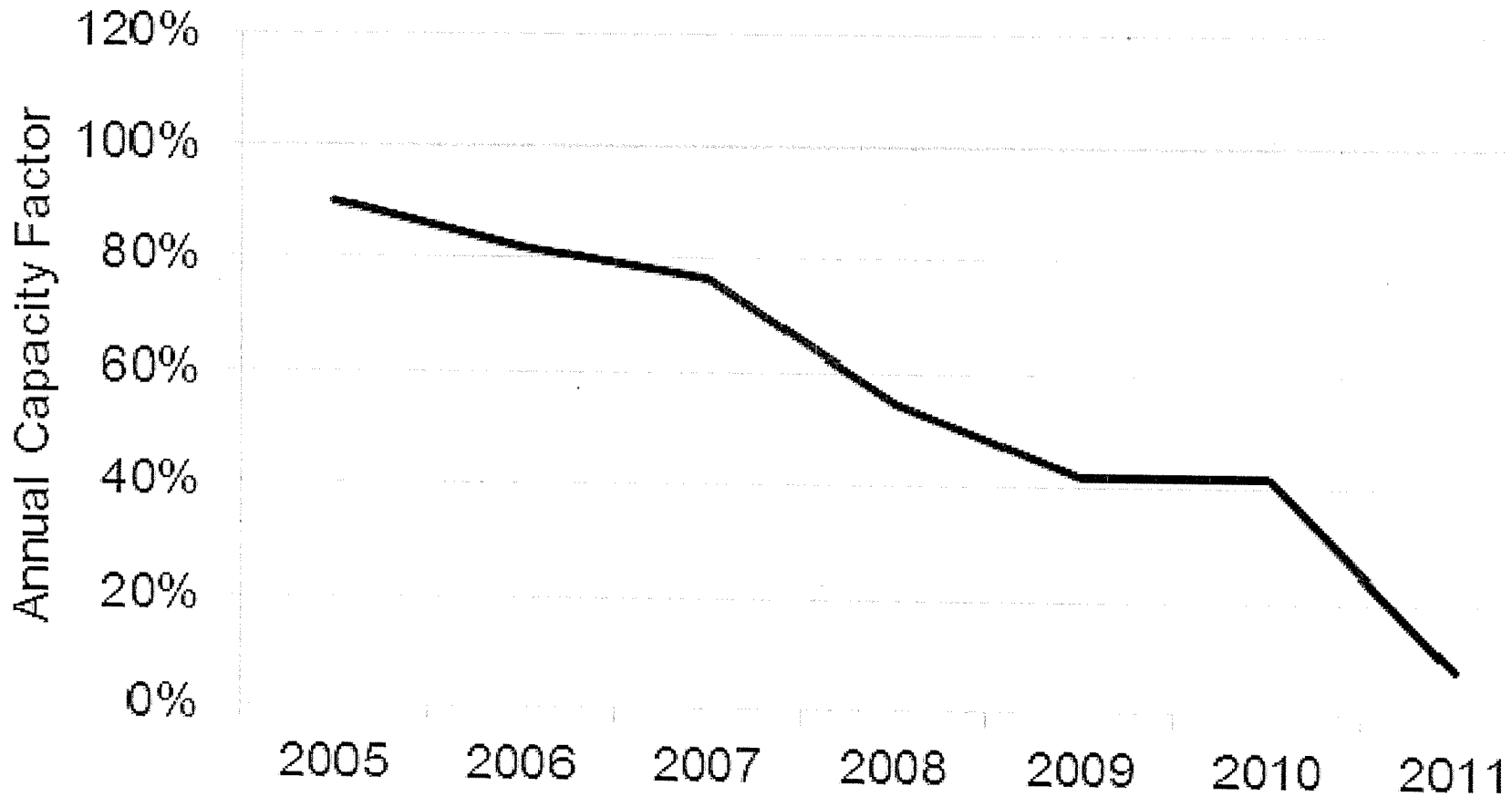


Sources:

EPA Air Markets Program Data 2005-2011.

EIA Form 860 2010.

2005-2011 Capacity Factor: Salem Harbor 2

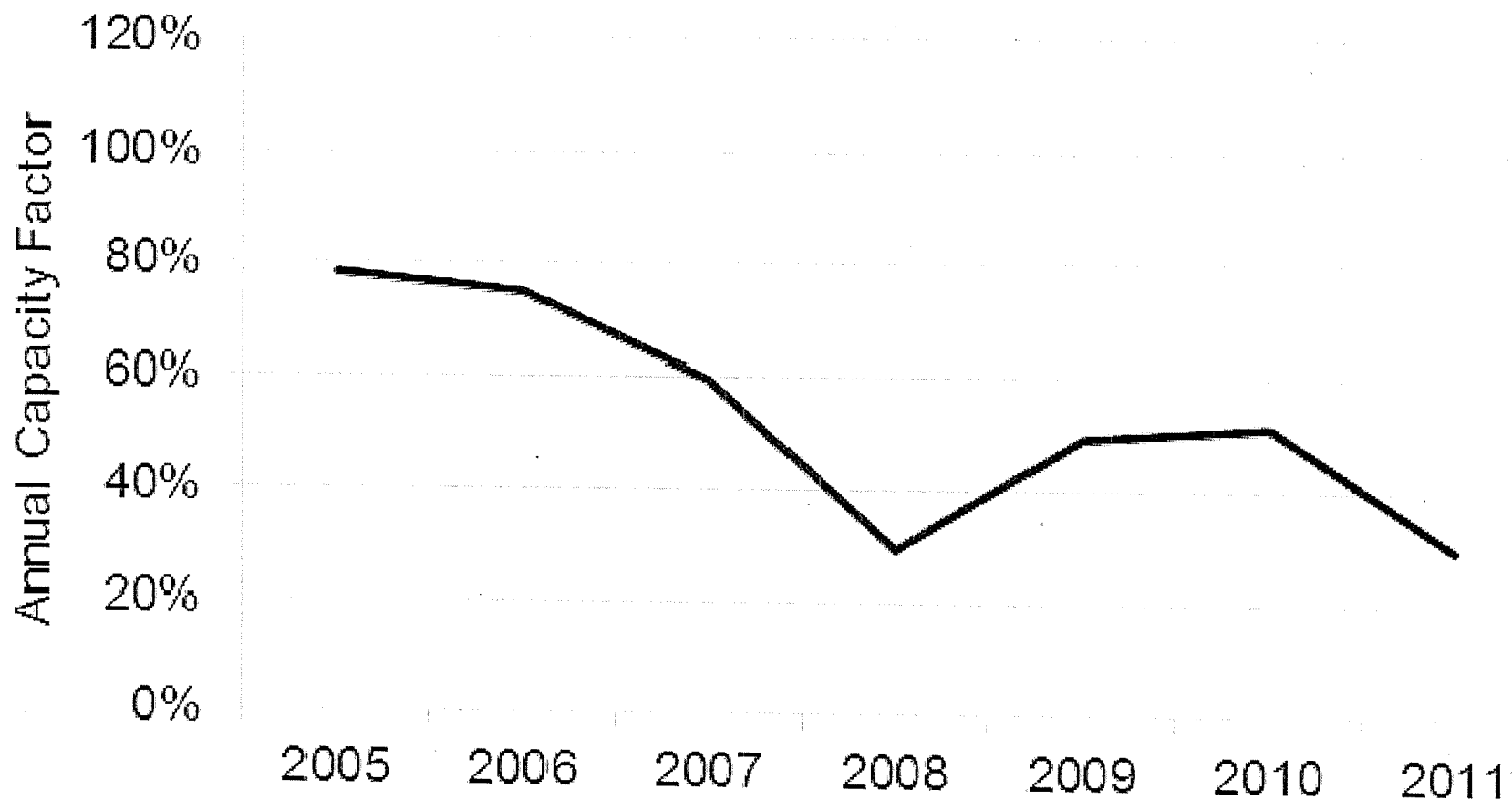


Sources:

EPA Air Markets Program Data 2005-2011.

EIA Form 860 2010.

2005-2011 Capacity Factor: Salem Harbor 3

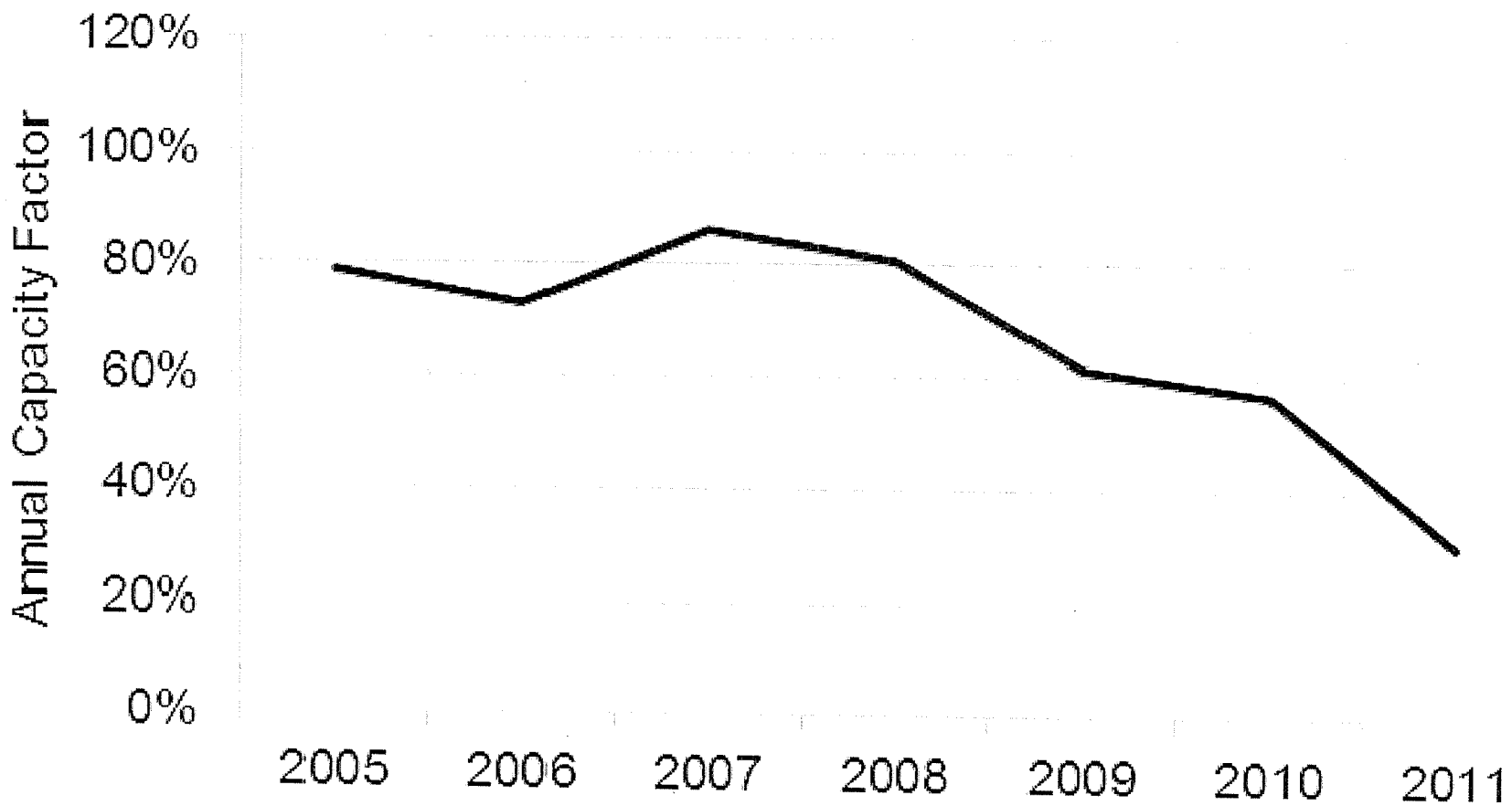


Sources:

EPA Air Markets Program Data 2005-2011.

EIA Form 860 2010.

2005-2011 Capacity Factor: Schiller 4

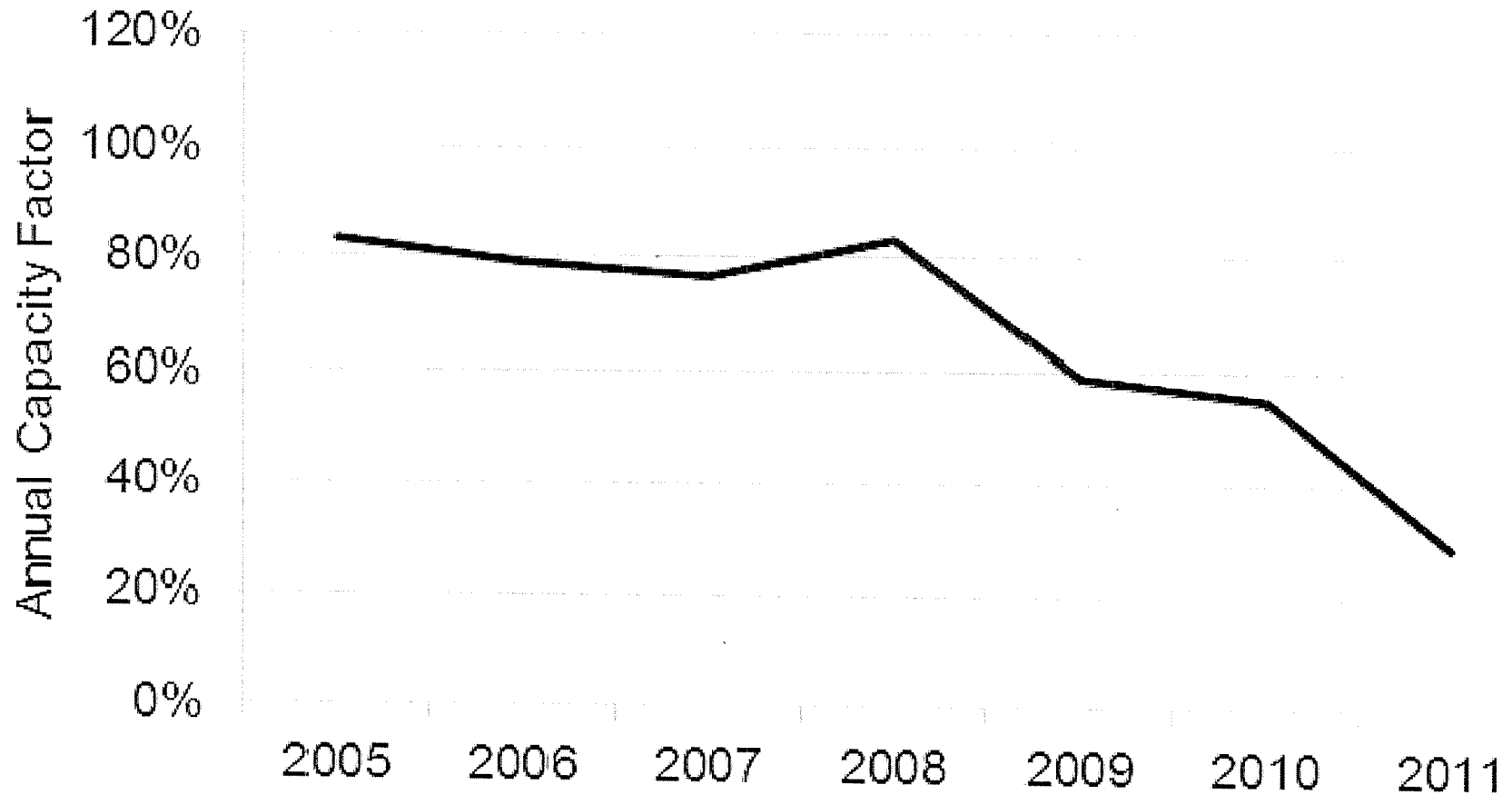


Sources:

EPA Air Markets Program Data 2005-2011.

EIA Form 860 2010.

2005-2011 Capacity Factor: Schiller 6



Sources:

EPA Air Markets Program Data 2005-2011.

EIA Form 860 2010.